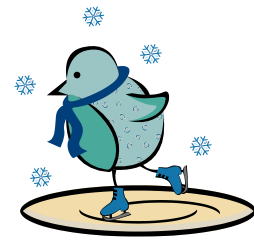


# ***Come Skate with Us!***

## **October 2025 – March 2026**

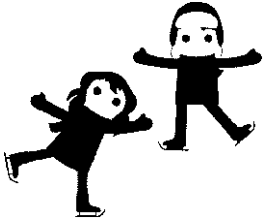
Sign up NOW for Group Skating Lessons  
At the New Hartford Recreation Center



Lessons held: **Sunday** (5-6pm) - **Monday** (6-7pm) - **Thursday** (5-6pm)

Attention new skaters, Olympic dreamers, and everyone in between! If you have never ice-skated and want to learn - or plan to continue lessons from last season, the Skating Club of New Hartford invites you to join our Learn to Skate USA program as a member of our club.

**In-person Registration held at the New Hartford Recreation Center (4 Mill Street)**



**Saturday, September 6, 10am – noon**

**Sunday, September 7; 5pm – 7pm**

**Monday, September 8; 5pm - 7pm**

***Sunday, September 14. On-ice: Bring a Friend/try your skates – 5-5:45pm.***

***Late Registrations accepted if spaces are available – 5-7pm.***

Learn to Skate USA was developed to teach ***children and adults*** the fundamentals of ice skating. Classes provide a fun and positive experience that will spark and sustain a lifelong love of skating. The curriculum offers every participant a rewarding experience, beginning with the first steps on the ice to the mastery of advanced skills.

**FALL SESSION (11 weeks):** Sunday, Sept. 28 – Dec. 7, 2025 (5pm – 6pm)  
Monday, Sept. 29 – Dec. 8, 2025 (6pm – 7pm)  
Thursday, Oct. 2 – Dec. 11, 2025 (5pm - 6pm)

***End of Session Holiday party for ALL Fall skaters on SUNDAY - 12/14/2025***

**WINTER SESSION (12 weeks):** Sunday, Jan. 4, 2026 – March 22, 2026 (5pm – 6pm)  
Monday, Jan. 5, 2026 – March 23, 2026 (6pm - 7pm)  
Thursday, Jan. 8, 2026 – March 26, 2026 (5pm - 6pm)

***End of Session Exhibition – for all Winter skaters on SUNDAY - 3/29/2026***

Skaters have a 30-minute lesson each week on their lesson day with the remainder of the session designated for practice. Additional individual practice times may be available, depending on registration numbers. **Skaters must have their own skates (rentals not available).**

Fees cannot be prorated and are non-refundable after classes have started.

Fall **OR** Winter season lesson fee is \$145. **Full year** discounted fee is \$280.  
All skaters must pay an annual \$50 registration in addition to the lesson fee.



Cash or check payments. Family discount for 3 or more skaters.

See you at the rink - and remember - **It's Great to Skate!**

**For more information on registration dates and times, please contact us at:**  
**315-734-5656**      **[SCofNH@gmail.com](mailto:SCofNH@gmail.com)**      **our website: [www.scnh.org](http://www.scnh.org)**